

# John Deere 6R 215

£142500 ex VAT



## Description

50K Autopower c/w TLS & cab suspension, 5 x ESCVs, ultimate front linkage, Autotrac ready, premium seat, premium radio, command arm with command pro, leather steering wheel, cooling compartment, VF710/60R42 & VF600/65R30 Trelleborg tyres.

Please make contact before travelling to view machinery to find exact location

[See this product on our website](#)

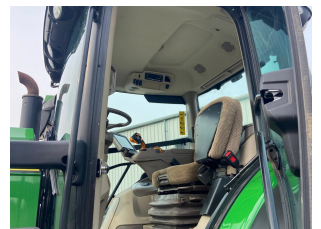
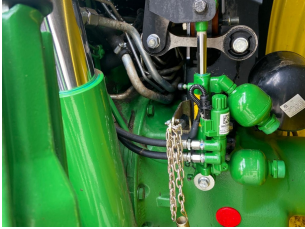
## Specification

Stock no: 51138151

Location: Ripon

Manufacturer:	John Deere
Model:	6R 215
Year:	2023
Operation hrs:	1931

### More images



JOHN DEERE				
T1b				
e1*167/2013*00322				
*1L06215RJPR187814*				
		13450	KG	
A-1		6180	KG	
A-2		10270	KG	
	T-1	T-2	T-3	
GROUND	3500	3500	3500	
4x4x4	19000	19000	18000	
kg/kg	37000	37000	37000	
	37000	37000	37000	

